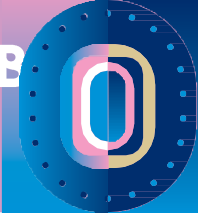


# ITINERARY : ALONG THE WATERSIDE, SURROUNDED BY NATURE, OUR UNEXPECTED TERRITORY



## GREEN & BLUE INFRASTRUCTURE : RESHAPING NATURE IN THE CITY

Urban ecology permeates all of Plaine Commune's public policies. Quality of life and the environment, sustainable development, better management of natural resources and the reduction of inequalities are at the heart of projects designed to meet the challenges of the 21st century and ensure the well-being of residents, while respecting that of future generations.



### KEY FACTS

Plaine Commune's objective is to undertake the ecological and social conversion of our territory. The aim is to improve the quality of life for everyone, while respecting the ecological and climatic imperatives of our time.

Plaine Commune is therefore committed to: integrating urban ecology into all its policies and projects, mobilizing and supporting local players, residents and users in the ecological and social conversion process, as well as implementing actions to improve the environmental quality of life in the area, and bringing cross-functional projects to life.

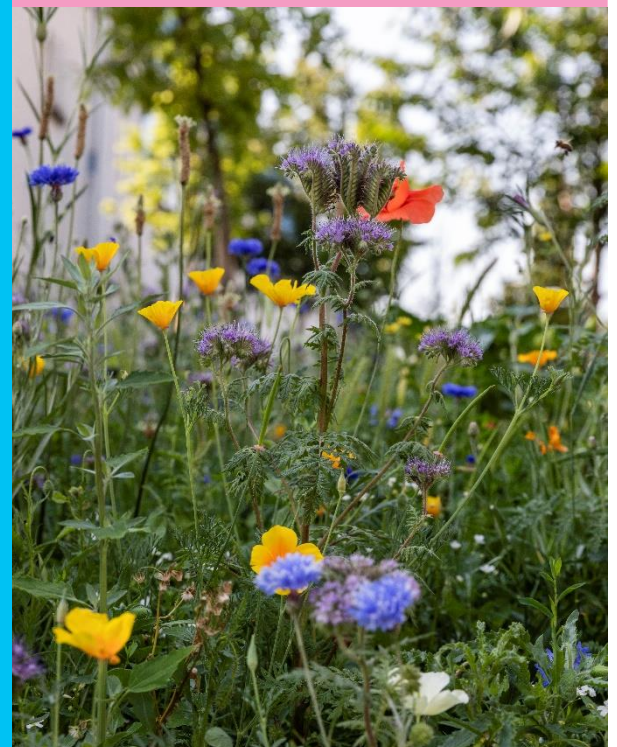
All these objectives are set out in three main framework documents: *Agenda 21*, the *Plan Climat Air Energie* and the *référentiel d'aménagement soutenable*.

Plaine Commune has a number of assets to support this political commitment: part of the territory is covered by green spaces such as the Georges Valbon departmental park and the Parc de la Légion d'Honneur. These are the biodiversity hubs of the urban green network.

The Seine and the Canal Saint-Denis, as well as the banks of these waterways, make up most of the area's blue network. These areas offer a variety of habitats for a wide range of plant and animal species. The Vieille Mer and the Ru des Arras in Saint-Denis are also potential blue water corridors.

### KEY FIGURES

- **1 REGIONAL PARK**, La Butte Pinson
- **2 LARGE DEPARTMENTAL PARKS** in L'île-Saint-Denis et Georges Valbon
- The departmental park Georges Valbon, **is bigger than Central Park in New York**
- 183 parks and squares
- 25 357 avenue trees
- 700 000 flowers planted each year
- **2 WATERWAYS**: The Canal Saint-Denis 6,6 km long and la Seine, 4 km long







80mn



## ITINERARY 1

### PLAINE COMMUNE, SURROUNDED WITH UNEXPECTED NATURE

**START: MAISON DU PROJET, PAUL ELUARD MUSEUM, SAINT-DENIS**

**STAGE 1: PARC DE LA LEGION D'HONNEUR, SAINT-DENIS**

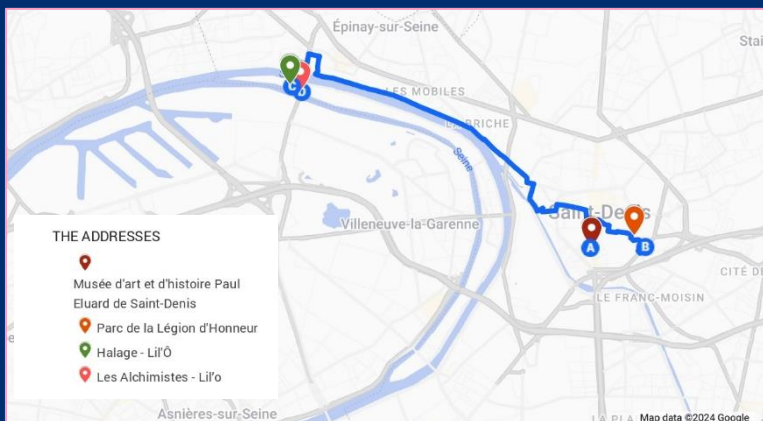
Owned by the Ordre national de la légion d'honneur, an agreement was signed with the city of Saint-Denis in the 1970s to open part of the park to local residents. Each spring, it hosts the "Tulip Festival", and in summer, the "Bel été".

**STAGE 2: VISIT TO LIL'Ô - A HUB FOR ECOLOGICAL AND CIVIC ACTIVITY**

Covering an area of 3.6 hectares, it is located in the heart of the L'île-Saint-Denis Natura 2000 zone. It is a demonstration site for eco-activity and depollution, a flower production site and an educational facility for the transmission of scientific know-how.

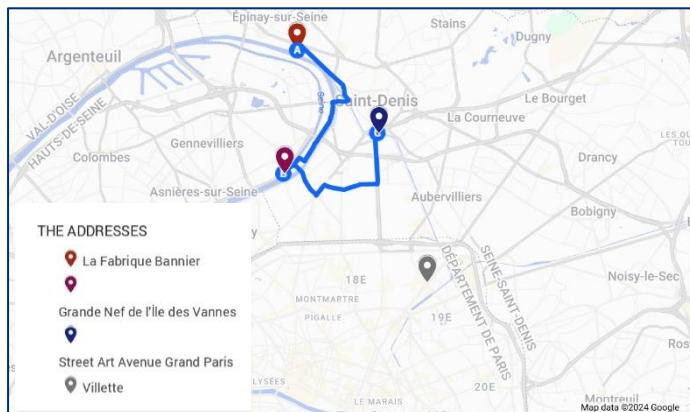
**STAGE 3: VISIT DES ALCHIMISTES**

It's a Social and solidarity company (ESUS) created in 2016, whose business is the collection and composting of urban food waste in local distribution channel. They design, install and operate micro-industrial composting units, making it possible to process significant volumes of food waste, including animal by-products (meat, fish...) in a professional manner.



## ITINERARY 2

### PLAINE COMMUNE, ALONG THE RIVERSIDE



**START : LA FABRIQUE BANNIER**

the Fabrique has been home to numerous craft and industrial activities over the course of its successive transformations. Since 2019, it hosts an ecosystem of companies from the social and solidarity economy, focusing mainly on sustainable food and soft mobility. There's also the newly refurbished Great Hall and Bar-Bar terrace, overlooking the water, dedicated to hosting cultural events.

**STAGE 1: LA GRANDE NEF "LUCIEN BELLONI"**

Located in the commune of L'île-Saint-Denis, it has been listed on the supplementary inventory of historic monuments since 2017. In 2022, the city of Saint-Ouen-sur-Seine and basketball player Tony Parker announced the opening of a basketball and padel training academy after the Games.

**STAGE 2 : SAINT-DENIS CANAL - 5 KM for everyone**

The only one of its kind in Europe, Street Art Avenue stretches for almost 5 km from La Villette to Aubervilliers, via Porte de Paris in Saint-Denis. An ideal route for art lovers, family outings and sports enthusiasts, accessible to all.



80 mn