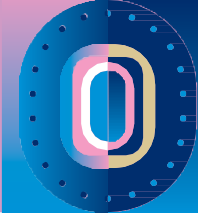


# ITINERARY: IMMERSION IN THE HEART OF ARTS AND CRAFTS IN PLAINE COMMUNE



## KEY FACTS

Plaine Commune is a place for artisans. Nearly 300 craft and design-related structures are located in the area.

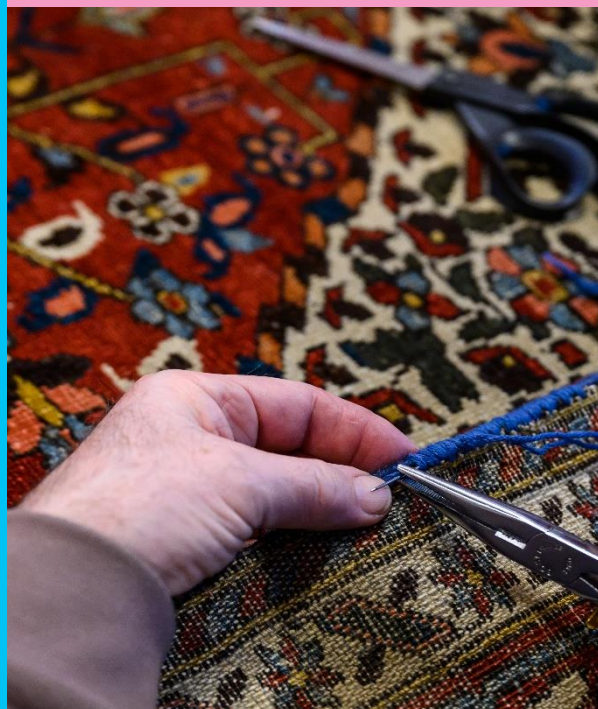
They are structured into different types of players, each with its own particularities:

- In Aubervilliers: a large number of players whose activities are linked to the performing arts; stage sets, costumes and show business... Aubervilliers is also home of the **19M**: a unique building where 12 Maisons d'art et de manufacture and a multidisciplinary gallery work, gathering 700 craftsmen and experts;
- In Saint-Ouen-sur-Seine: more than twenty art and craft artisans have been based in the heart of the Flea Market for a long time, restoring objects for second-hand dealers and antique dealers. Since 2019, new craftsmen have been emerging in and around the Flea Market (ceramics - styling - bookbinding) or in restoration (reuse - bookbinding, etc.).

Some craftsmen have been awarded the EPV (Living Heritage Company) label. This is a mark of recognition from the French government, set up to distinguish French companies with excellent craft and industrial skills. 3 EPVs are located in Saint-Denis, 1 in Aubervilliers and 1 in Saint-Ouen-sur-Seine, and have been present in the area for nearly 20 years.

## KEY FIGURES

- 1 emblematic place : the 19 M under one roof, bringing together 12 Maisons d'art et de manufacture and a multidisciplinary gallery, representing 700 craftsmen and experts.
- 1,500 craft-related jobs, 55% of which are held by women.
- 1 emblematic and unique project: the Follow the Spire association, which is rebuilding the north bell tower and spire of the cathedral basilica of Saint-Denis, the cradle of Gothic architecture.
- Arts and Crafts Excellence Award, organized by the Chambre des métiers et de l'artisanat de Seine-Saint-Denis: 6 artisans from Plaine Commune were rewarded in the 3 prize categories.





80mn



## Itinerary 1

### SAINT-DENIS, A CITY OF ART AND SAVOIR-FAIRE

**STAGE 1: LE 6B**, 6 quai de Seine. Located on an brownfield in Saint-Denis, the 6B, owned by Plaine Commune since early 2024, is a unique creation and distribution center in the Paris region, hosting a rich creative ecosystem of over 250 structures and resident artists.

**STAGE 2: LA BRICHE** A center for crafts and creativity, located on a former industrial site that has been converted into artists' studios. Today, it is self-managed. La Briche Foraine is a craft fair imagined and built by resident artists since 2012.

**STAGE 3: HCE GALLERY** is a place that prepares the ground for contemporary art, art that guides the development of cities as they aspire to become territories of culture and creation.

**STAGE 4: LA COOPÉRATIVE POINTCARRÉ** is a café, a co-working space, a boutique, a digital fabrication workshop and a FabLab. The Pointcarré workshop is a space for experimentation, prototyping and small-scale production.

#### LET'S DISCOVER EPINAY-SUR-SEINE !

**STAGE 5: L'ECLAIR** the Soukmachine collective occupies nearly 8,000 m<sup>2</sup> over 3 buildings. It offers a unique and inspiring working environment for its residents, focusing on three major areas: visual arts, live performance and artisanal construction.

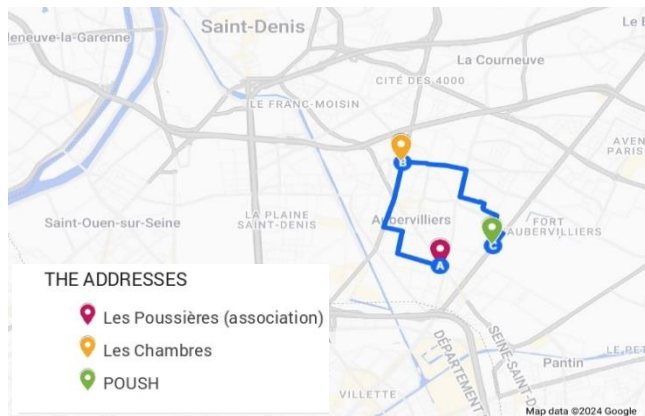
**STAGE 6: ABOMINABLE-NAVIRE ARGO**, the association will occupy a 1,600m<sup>2</sup> space at the entrance to the L'Eclair site. It will build its shared filmmakers' laboratory, as well as a public screening room dedicated to film (super 8, 16 mm, 35 mm).

## Itinerary 2

### DISCOVERING AUBERVILLIERS' SAVOIR-FAIRE AND ART CREATORS



50 mn



**STAGE 1: LES POUSSIÈRES** a place for culture, encounters and creation for residents and artists. Les Poussières is committed to inclusion, and to a generational, cultural and social mix.

**STAGE 2: LES CHAMBRES** an avant-garde space dedicated to the creation, promotion and dissemination of avant-garde artistic talent: from tattoo to plate, carried by infinite influences, both traditional and futuristic.

**ETAPE 3: POUISH**, an artists' center for creation and exhibition, it welcomes and supports over 270 established and emerging artists of more than 40 nationalities.

