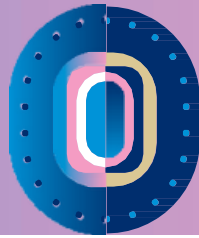


# TOUR: AT THE HEART OF THE CIRCULAR ECONOMY



As the territory experiences significant urban development with large-scale projects such as the construction of the future Olympic and Paralympic Village and seven stations of the Grand Paris Express, Plaine Commune aims to create a new, more rational and reasonable model of development for the territory.



## KEY INFORMATION

In response to the profound changes in its territory, Plaine Commune chose in 2017 to launch an ambitious project called "Urban Metabolism"\*.

Its objective: to experiment with a circular economy approach on construction sites, to prove that dense urban development is compatible with a rational management of resources, capitalizing on its "urban mine" to renew and build itself, and promoting the deployment of new sectors for the recovery of construction materials. It addresses several issues: limiting the consumption of new construction materials, reducing construction waste and improving waste sorting, reducing truck traffic, changing the perception of waste, and promoting local employment.

To engage with local stakeholders, Plaine Commune launched the Circular Economy Charter in 2019: a document binding the community and city-building stakeholders on the basis of concrete eco-responsible commitments in the construction sector. The signatories commit, among other things, to allocate 1% of the construction/renovation budget to the purchase of products from reuse, reprocessing, and recycling, or to generalize the use of construction concrete incorporating at least 5% recycled materials.

## KEY FIGURES

### URBAN METABOLISM ACCORDING TO PLAINE COMMUNE MEANS:

- More than 70 projects supported in the territory;
- Focusing on outdoor spaces/public spaces: a goal of dedicating 20% of the construction budget to the purchase of products from reuse, reprocessing, or recycling;
- On deconstruction sites: a 90%/95% recovery rate achieved (compared to the regulatory target of 70%). On average today, materials are recovered 80% by associations/actors of the Plaine Commune ecosystem (mainly social and solidarity economy);
- 4 physical platforms for the circular economy in the construction sector within the territory.





80mn



## TOUR

## FROM SAINT-DENIS TO STAINS



**DEPART: MAISON DU PROJET, MUSEE PAUL ELUARD, SAINT-DENIS**

**STEP 1: ZAC DES TARTRES** Straddling the communes of Pierrefitte-sur-Seine, Saint-Denis, and Stains  
Possibility to see the reuse of cobblestones and dry stones in public spaces, especially around the Lucie Aubrac school group.



**STEP 2: THE "FAISEURS DE TERRE" PLATFORM** Located at Saint-Denis Fort de l'Est Group formed by Topager, Néo-éco, and Halage to produce fertile substrates (green waste aggregates + excavated soil).

**STEP 3: THE "REAVIE" PLATFORM** Located at L'île-Saint-Denis on the Cofrane site at 13 quai du Chatelier "Réavie" develops the reuse of construction materials (finishing works) to reduce waste in the construction sector.

**STEP 4: THE RESILIENCE BUILDING** Located in Stains at the heart of the farm of possibilities at 29 rue d'Amiens The Resilience building aims to be entirely made of bio-based or reused materials in an experimental, bioclimatic architectural approach based on locally available resources.

