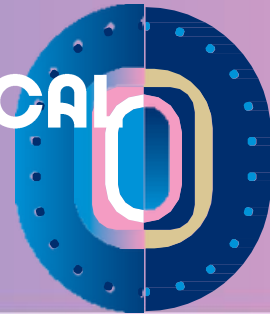


TOUR: AT THE HEART OF THE ECOLOGICAL AND URBAN HERITAGE OF THE GAMES



THE SUSTAINABLE GAMES OF PARIS 2024!

The Paris 2024 Games aim to set a standard for environmental sustainability. Plaine Commune, staying true to its sustainable and efficient urban development principles, has envisioned projects that will enhance the quality of life for all residents long after the Games are over.



KEY INFORMATIONS

Since 2010, Plaine Commune has been committed to a Climate Plan, recognizing early on the importance and necessity of changing the model for the territory's inhabitants and users. The developments planned for the Games align with Plaine Commune's ongoing ecological policies: redevelopment of the banks of the Canal Saint-Denis and the Seine, noise barrier construction, burying high-voltage power lines, creating green spaces and nature areas, and using low-impact materials like wood or recycled construction waste materials.

After the Games, the Athletes' Village will transform into a sustainable urban district with reversible buildings designed to withstand climate change, numerous green spaces, and a focus on energy efficiency, biodiversity, and active transportation modes like walking and cycling.

The Games will also lead to the creation of new natural and recreational areas in the territory, such as the Terrain des Essences in La Courneuve and the water sports base in L'Île-Saint-Denis, as well as new parks and squares for residents to walk, relax, exercise, and enjoy fresh air.

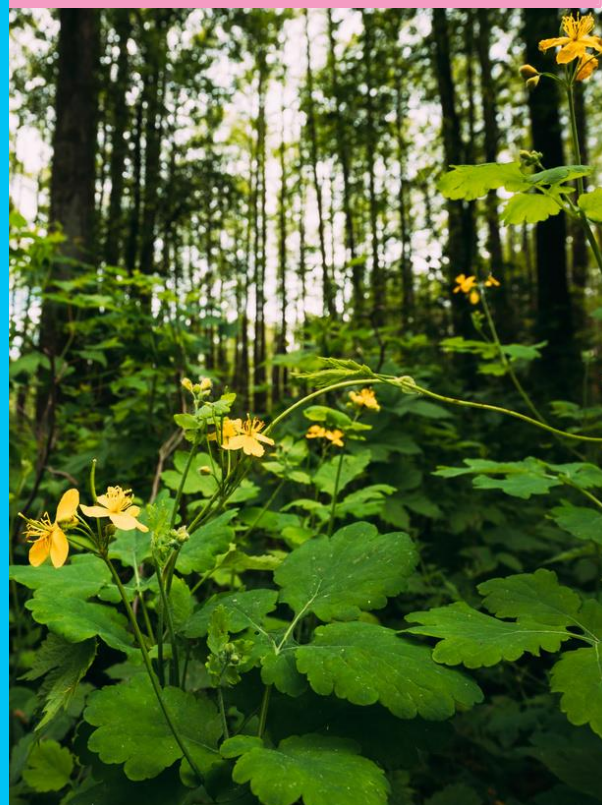
KEY FIGURES

- The Olympic and Paralympic Village will become a sustainable urban district with a 50% reduction in greenhouse gas emissions, adapted to climate change by 2040 (+1.5°C).

- Five new pedestrian and bicycle bridges to facilitate active transportation.

- 26 hectares of new natural spaces created.

- Over 20 km of new bicycle paths.





80mn

TOUR

START: MAISON DU PROJET, PAUL ELUARD MUSEUM, SAINT-DENIS

STEP 1: THE ATHLETES' VILLAGE Spanning the communes of L'Île-Saint-Denis, Saint-Denis, and Saint-Ouen-sur-Seine. The Olympic Village has been a testing ground for several new environmental innovations, proving their effectiveness and replicability:

- Low-carbon prefabricated concrete slabs incorporating bio-sourced materials, zero-threshold showers on wooden floors, the "Cycle" building with gray and black water recovery, recycling, and reuse, indoor air treatment systems, canopies with outdoor air treatment, rainwater storage pavements, and natural space irrigation systems.
- The building structures are mainly composed of wood, with wooden facades for all housing units. Office building floors are made of low-carbon concrete with wood-framed facades. The buildings are connected to a heating network powered 68% by renewable energy (geothermal). Photovoltaic installations aim to cover 20-25% of daily electricity consumption.
- Roofs favorable to insects and birds, permeable fences allowing small wildlife to pass through, and nearly 9,000 trees and shrubs planted.

STEP 2: LE BASSIN DE LA MALTOURNEE From Rue Heurtault to Rue Claude Bernard in Aubervilliers to Saint-Denis. The landscape enhancement of this unique site along the Canal Saint-Denis will provide shade, coolness, and biodiversity enrichment. The towpath will offer separate and clearly marked routes for pedestrians and cyclists, along with comfortable furniture to enjoy the landscape. Lighting will be adapted for a serene nighttime ambiance and active transportation, directed towards the ground to respect the dark-sky framework.

STEP 3: LE TERRAIN DES ESSENCES Located in the Georges-Valbon Park in La Courneuve. After the Games, this site will be integrated into the Georges-Valbon departmental park, expanding it by 13 hectares. This new space will be divided into three sectors:

- The northern area will serve as a wildlife refuge, accessible to the public in a limited manner via an elevated path, closed during wildlife breeding seasons. This "ecological reserve" will also feature an observation post to view the site.
- The central area will consist of meadows and lawns, allowing for both walking activities and wildlife observation.
- The southern area will offer a large park entrance with amenities and landscapes conducive to relaxation, play, and walking. The new entrance will be accessible by public transport (T11 and bus). Two pathways will connect to the rest of the park towards the circular route.

