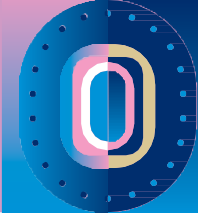


URBAN PLANNING, BUILDING A SUSTAINABLE CITY



REUSE, RENATURATION, RESILIENCE, WHEN THE CITY GIVES ITSELF SOME AIR..

#HASHTAGS

Architecture, transitional urbanism, urban metabolism, resilience, renaturation, soils, pollution, reuse, deconstruction



SYNOPSIS

For over twenty years, Plaine Commune has been recognized for the inventiveness of its public policies. The territorial public establishment has continuously explored innovative approaches, positioning art and culture at the heart of its development project, as well as the regenerative principle of urban metabolism in its construction projects. This is illustrated in five acts.

From Actlab to the Athletes

Village Île Saint-Denis is a collection of several islands, primarily composed of accumulated construction debris from the 19th century, especially in its central part where the town center is located. This method of reclaiming existing materials on the territory in an urban metabolism approach significantly influenced the construction of the Athletes' Village, partially located on the island. This reuse was planned well in advance. As early as 2012, on Île-Saint-Denis, Bellastock, a cooperative committed to ecological and social transition in architecture and construction, established its "Actlab." This was the first manifest laboratory for material reuse in France, co-constructed with Plaine Commune and Plaine Commune Development, before making way for the construction of the fluvial eco-district that now hosts part of the Paris 2024 Athletes' Village.

Illuminating Reuse

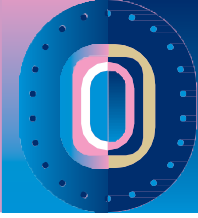
The streetlights that brighten the celebration evenings in the streets and squares of the Athletes' Village this summer are made from materials experiencing a second life. The poles are repurposed wooden electric poles, while the light arms come from old scaffolding. SOLIDEO worked with Plaine Commune's services to strip these materials.

WHO TO TALK ABOUT IT?

Plaine Commune Press Service - Félix Grand felix.grand@plainecommune.fr

01 71 86 36 73 - 07 76 62 40 56

URBAN PLANNING, BUILDING A SUSTAINABLE CITY



REUSE, RENATURATION, RESILIENCE, WHEN THE CITY GIVES ITSELF SOME AIR..

ZAC des Tartres, a Neighborhood Born on the Residents' Couch

For the development of the ZAC des Tartres, a new neighborhood located in the municipalities of Pierrefitte-sur-Seine, Stains, and Saint-Denis, Plaine Commune's cultural and creation territory approach collected residents' expectations to design and adapt public spaces for future uses. Consequently, a 15-hectare park, out of the 35 hectares of the project, will consist of open spaces, playgrounds, sports facilities, and community gardens. These amenities, desired by the residents, were gathered by Plaine Commune, which had asked urban psychoanalysts, storytellers, enchanters, and artists from the National Agency of Urban Psychoanalysis to explore the neighborhood and conduct "couch" operations to capture its ambiance. Every year, a call for research projects "Creating the City with Art and Culture?" is launched by Plaine Commune in partnership with the Maison des Sciences de l'Homme Paris Nord.

Lil'Ô, Ecological Demonstrator

Since 2018, on the northern tip of Île-Saint-Denis, Lil'Ô is a popular ecology project led by the association Halage along the Parc départemental de l'Île-Saint-Denis. On a former 3.6-hectare industrial site, the goal is to regenerate soils consumed by concrete and pollution. Six years after its establishment, Lil'Ô is transforming into a platform for scientific, social, and artistic innovation. Practically, the site allows Halage to experiment with sustainable environmental solutions. For example, the "Soil Makers" project simulates green roofs using light substrates like clay balls and pozzolana, aiming to create a fertile and marketable substrate. More spectacularly, on this former concrete-covered site, Lil'Ô has started to relocate flower production within France. After providing bouquets to the Stade de France and the Roland Garros tournament, its horticulture team supplied bouquets this summer for the public reception areas and award ceremonies of the Olympic and Paralympic Games.

Resilience, a 100% Bio-sourced Building

Located in the heart of La Ferme des Possibles in Stains and housing the headquarters of the Novaedia Cooperative, Resilience is an 1882 m² building constructed bioclimatically with bio/geo-sourced and reused materials. Raw earth from the site, straw, wood, and reused construction materials are the primary resources. The long glazed façade, for instance, is composed of reused single-glazed windows from a neighboring deconstruction site in Epinay-sur-Seine. Regarding energy, a "Trombe wall" made of reused compressed raw earth bricks captures solar heat, while a thermo-frigo-pump simultaneously and efficiently produces cold for cold rooms and heat for offices, powering a network of reused cast iron radiators.

WHO TO TALK ABOUT IT?

Plaine Commune Press Service - Félix Grand felix.grand@plainecommune.fr

01 71 86 36 73 - 07 76 62 40 56