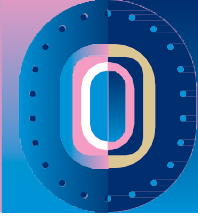


# URBAN PLANNING, BUILDING A SUSTAINABLE CITY



## 5 SITES TO GET SOME FRESH AIR IN PLAINE COMMUNE

### #HASHTAGS

Park, heritage, artistic discovery.



### SYNOPSIS

**On the Trails with Utrillo.** Situated on former quarries extending at the confluence of Seine-Saint-Denis (Villetaneuse, Pierrefitte) and Val d'Oise (Montmagny, Groslay), the Butte Pinson Regional Park offers a chance to explore the Maurice Utrillo Trail, a treasure hunt tracing the locations where the master of the École de Paris set up his easels.

**Skating and Gardening in Saint-Ouen-sur-Seine.** In the Docks district, this 12-hectare park features a pond, a skatepark, children's playgrounds, the Wangari educational greenhouse, and community gardens. The park also houses the Château of Saint-Ouen-sur-Seine, which was owned by Louis XVIII in the early 19th century.

**Along the Water in Epinay-sur-Seine.** With more than two kilometers of riverbanks developed for walking and cycling, from Béatus Park to Foch Boulevard, Epinay-sur-Seine is the only town in Île-de-France with such a riverside promenade. Spaces dedicated to observing the biodiversity of the flora and fauna along the banks of the Seine are arranged along the water.

**In Saint-Denis, the Sports Fans' Park.** The Parc de la Légion d'Honneur is a 24-hectare urban park, surrounded by a stone enclosure that was once an annex of the Saint-Denis Abbey, now the Maison de la Légion d'Honneur. Throughout the year, an agreement with the City, established in 1970 with the National Order of the Legion of Honour, allows for public and free use of the southern 8 hectares of the park.

**Georges-Valbon, the Green Lung of Seine-Saint-Denis.** The third largest park in Ile-de-France after the Bois de Vincennes and Boulogne, the Georges-Valbon Park spans 400 hectares across 4 Plaine Commune municipalities (La Courneuve, Stains, Saint-Denis, Dugny) and one Val d'Oise municipality (Garges-lès-Gonesse). Until the 19th century, the park's hectares were home to vegetable, cereal, and then market gardens. It is classified as a Natura 2000 zone for its diverse fauna and flora.

## WHO TO TALK ABOUT IT?

Plaine Commune Press Service - Félix Grand [felix.grand@plainecommune.fr](mailto:felix.grand@plainecommune.fr)

01 71 86 36 73 - 07 76 62 40 56