

## THE HERITAGE

### A NEIGHBORHOOD WHERE IT WILL BE GOOD TO LIVE

From 2025 the Athletes' Village will give way to real neighborhoods along the Seine. Spaces where living will be a pleasure, organized around large squares (place de la Batellerie in L'Île-Saint-Denis, place des athlètes in Saint-Denis...), large walkways, plenty of green spaces (urban parks in Saint-Denis and L'Île-Saint-Denis, mail Finot in Saint-Ouen...) and extensive green areas allowing local residents and users to meet and enjoy the redesigned riverbanks. All streets will be equipped with bicycle ways and large walkways. The objective is to encourage walking and cycling, as well as to promote local commerce. Children's play areas and sports circuits will also turn these peaceful streets into leisure areas.

The neighborhood will be graced by works of art from "Courants fertiles", a cultural initiative developed by SOLIDEO. The Olympic project's implementation of underground high-voltage power lines (under the supervision of RTE) and the creation of a noise barrier along the highway A86 will benefit the quality of life of local residents by improving the quality of the landscape and reducing visual, electromagnetic and noise pollution.

### AN ACCESSIBLE NEIGHBORHOOD

All public areas in the Athletes' Village will be fully accessible. There will be plenty of sitting and resting areas, and ramps for disabled access will be provided at every staircase to ensure that everyone can move around easily.

A bridge will be built over the Seine for walkers, cyclists and buses. 130 meters long, it will connect L'Île-Saint-Denis with the allée de Seine in Saint-Denis, allowing residents of L'Île-Saint-Denis to access the Carrefour Pleyel metro line (M13) and the future Saint-Denis Pleyel station (M14, 15, 16 and 17) in just a few minutes by foot or bicycle!

The restructuring of the Pleyel interchange - under the supervision of the DiRIF (French government) - will facilitate traffic conditions on the highways and access to the district by the A86 highway. Particular attention will be given to its environmental and landscape integration.

## WORKS

### EXEMPLARY WORKSITES

- The Olympic infrastructure sites are exemplary in their approach, giving priority to the reuse and recycling of components from deconstructed buildings ;
- 95% of materials from construction sites are recycled and reused. Some of the concrete from deconstructed buildings is crushed in place and reused in the construction of future roads ;
- Another part of the concrete and the earth is transported by boat to treatment centers to be reused as substrate for the Village's future plantations ;
- 50% of the excavated material is evacuated by boat via the Seine to reduce truck traffic on the roads and limit greenhouse gas emissions (a 5,000-tonne river shipment is equivalent to 250 trucks) ;
- Worksite coordination and communication measures are being implemented to limit nuisances and their impact on the daily life of local residents.



### TIMELINE

**2020 - 2023**

Construction and renovation works

**The end of 2023 / beginning of 2024**

The end of the works of the Village by SOLIDEO

**MARCH 1ST 2024**

Delivery of the Athletes Village To the Games

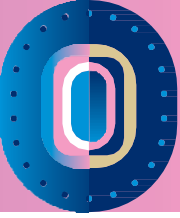
**2016 - 2020**

Studies and regulatory authorizations

**2025 - 2026**

Conversion of the Village into a mixed-use neighborhood

# THE ATHLETES VILLAGE



### A PRE-EXISTING URBAN PROGRAM , ENRICHED BY THE OLYMPIC PROJECT

Located on the Pleyel - Bords of Seine site, between the cities of Île-Saint-Denis, Saint-Denis and Saint-Ouen, the Athletes' Village will be built as part of urban projects already in progress, such as the "Territoire de la culture et de la creation" and the redevelopment of the Pleyel district. From 2025 it will be transformed into three new neighborhoods accommodating 6,000 residents.



### THE PROJECT

### A VILLAGE ON THE BANKS OF THE SEINE, FUTURE CITY NEIGHBORHOODS

The construction of the Athletes' Village is based on the urban projects of the eco-neighborhood along the river at L'Île-Saint-Denis, Universeine in Saint-Denis and a historic industrial zone in Saint-Ouen. This project is part of several initiatives currently in progress : the "Territoire de la culture et de l'environnement" (Culture and Urban Development Territory) the "Territoire de la culture et de la création", with new artistic itineraries and the construction of a major new facility (the Cité des arts); the redevelopment of the Pleyel district around the future "Grand Paris Express" station; the development of a green and blue network, of which the banks of the Seine are a key component; the upcoming urban renovation of Old Saint-Ouen, and the rehabilitation of heritage buildings such as the large arena of the "Île des Vannes" sports complex and, inside the Village, the "Pablo Neruda" gymnasium and the "Maxwell" hall.

One of the challenges of this project was to start by designing a heritage, in other words, a neighborhood to live in, responding to the needs of the residents, and then using it as a reference to create athletes' infrastructures during the Games.

The Village will also make it possible to implement various projects, including the installation of underground power lines over L'Île-Saint-Denis, the construction of an anti-noise wall along the A86 highway and the creation of a bridge reserved for bicycles, walkers and buses to cross the river between Saint-Denis-Pleyel and L'Île-Saint-Denis.

## DURING THE GAMES

The Plaine Commune territory will be under the world's spotlight during the 2024 Olympic and Paralympic Games. The Athletes' Village will be home to nearly 14,000 Olympic and Paralympic athletes and their families. To welcome them in the best possible way, a large number of versatile facilities are being built.

The ideal location of the athletes' Village, close to Saint-Denis Pleyel station (metro line 14), RER D and metro line 13, RER B, the future Olympic Aquatic Center and all training facilities, will ensure that 85% of the athletes stay less than 30 minutes from their competition venue. Everything is in place to provide the best welcome possible.

## THE VILLAGE IN NUMBERS

### • 16 000 BEDS

for athletes and accompanying persons during the Olympic Games.

### • 9 000 BEDS

pour for athletes and their companions during the Paralympic Games.

### • 60 000 MEALS A DAY

the Cité du Cinéma's main restaurant, in the heart of the village (less than 500 m from all residential accommodation and services), as well as cafés and fast-food areas to complement the restaurant offer.

#### PROJECT MANAGEMENT :

SEM Plaine Commune Développement for Île-Saint-Denis city / SOLIDEO for Saint-Ouen and Saint-Denis cities / Seine-Saint-Denis Department for the bridge between Île-Saint-Denis and Saint-Denis cities

#### PROJECT ENGINEERING :

SAS Ampère - Vinci Immobilier (Universeine in Saint-Ouen city) / Group Pichet-Legendre (eco neighborhood fluvial in Île-Saint-Denis city) CDC - CDC Habitat - Icade Promotion (The D sector in Saint-Ouen city) / Nexity SA - Eiffage Immobilier IDF - CDC Habitat Groupama Immobilier (The E sector in Saint-Ouen city).

#### PRE-OPERATIONAL URBAN PLANNING STUDIES :

Philippon-Kalt architectes (econighborhood fluvial in Île-Saint-Denis) / Dominique Perrault architecture - Agence TER - Une fabrique de la Ville - Ingérop - Urban Eco Citec - Folacci-Lamoureux (Saint-Ouen and Saint-Denis cities).

## THE VILLAGE FROM 2025...

After the Games and the construction phase, by 2025 the Village will have given way to three new, lively city districts that will welcome residents, employees and users of the many activities and services available there.

## 6 000 INHABITANTS / 6 000 EMPLOYEES

### IN SAINT-OUEN-SUR-SEINE AND SAINT-DENIS CITIES

#### • 2 800 RESIDENTIAL PROPERTIES

(including 25% to 40% social housing, depending on the municipality) and **900 SPECIFIC ACCOMODATIONS** (students, older people, etc.)

• **2 SCHOOLGROUPS** (nursery school and elementary school) in Saint-Ouen-sur-Seine, Saint-Denis and a new gymnasium in Saint-Denis and the renovated **LYCÉE MARCEL CACHIN** in Saint-Ouen

• **THE COMPLEX OF ÎLE DES VANNES** rehabilitated

• **2 CRECHES** each one with 30 baby berths

• **PABLO-NERUDA GYMNASIUM** of Saint-Ouen of Saint-Ouen rehabilitated and enlarged

• **1 GRAND URBAN PARK**

• **117 000 m<sup>2</sup>** businesses, offices and **2 000 m<sup>2</sup>** of local shops

• **1 FIRE STATION** and **1 RIVER POLICE STATION**

### IN ÎLE-SAINT-DENIS CITY

• **2 000 FAMILY HOUSING**

(including 90 social housing units and 20 for social home ownership) ;

• **1 STUDENT RESIDENCE** with 130 bedrooms ;

• **1 URBAN PARK** of 1,3 hectare ;

• **1 HOTEL** of 115 bedrooms ;

• **2 OFFICE BUILDINGS** and **1 850 m<sup>2</sup>** of commerce ;

• **1 NAUTICAL LEISURE CENTER** of 1 200 m<sup>2</sup> ;

• **1 "CITÉ DES ARTS" COMPLEX** of 1 500 m<sup>2</sup> ;

• **1 MOBILITYHUB**

## THE "SERVICE PERSO" ASSOCIATION, A LOCAL PLAYER AT WORK

The contract, signed as part of a consortium, will enable 9 companies specializing in disability and social integration, of which 6 are located in Seine-Saint-Denis, to take part in the life of the Village from the moment the athletes arrive. These associations will be handling 8,000 kilos of laundry a day for 15,000 athletes during the Games time !

